

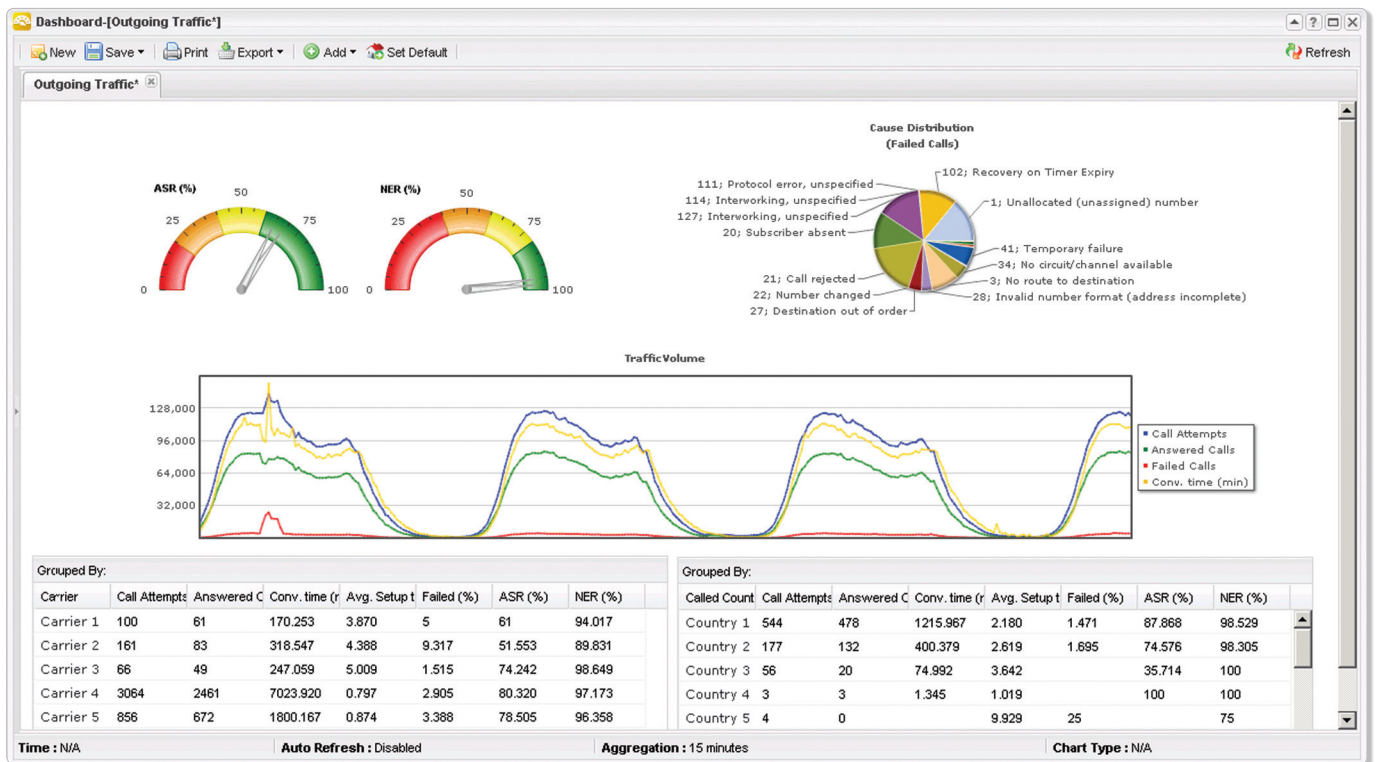
Maintain profitability in your fixed-line networks

Fixed-line operators face challenges of lower revenue and increased competition. But despite these conditions, they still have opportunities to thrive if their biggest asset is well taken care of—their customers. Almost all households have a relation to a fixed-line operator, and if these relations are well-managed they will make a very good customer-base for up-selling of new services.



Regardless of whether you are operating a traditional PSTN network or running VoIP services, Polystar's solution helps you assure the Quality of Service. Our fixed-line solution provides a very cost-effective migration path for operators moving from PSTN to VoIP, providing extensive reuse of both hardware investments and software licences.

With our solution you will be able to monitor anything from high-level application and conversation flow information all the way down to the actual packets. Polystar's unique reporting features let users take proactive steps to maintain service quality.

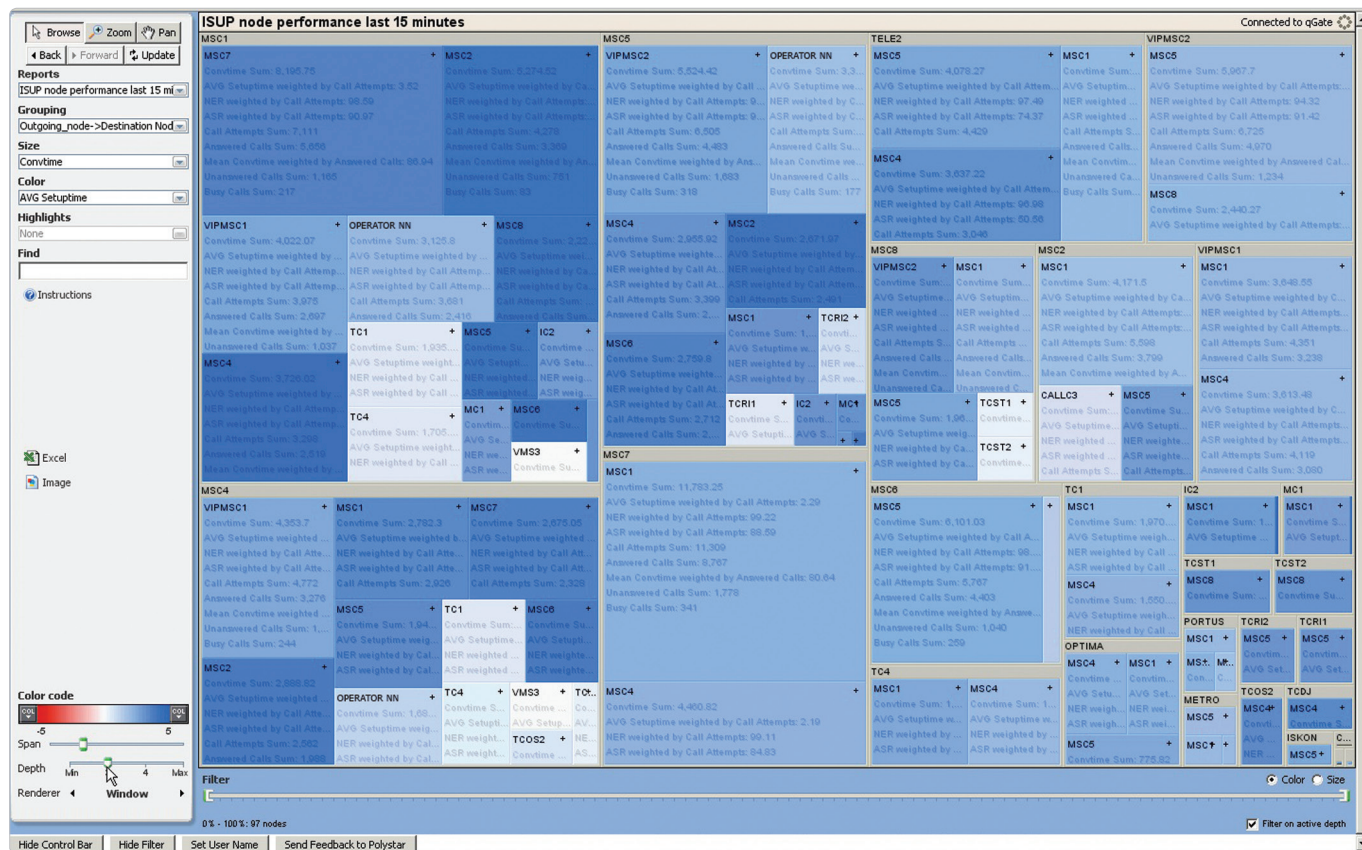


KPIs for outgoing traffic, displaying real-time and historical data.

The Fixed Line solution monitors everything from legacy PSTN to Triple/Quadruple Play IP configurations. It is the perfect tool to monitor new innovative services in a VoIP environment, with graphical overviews of performance status and the possibility to use drill-down analysis to solve delivery problems. Another advantage is the capability to monitor the actual voice quality in a VoIP network, otherwise an area of uncertainty in a shared-media environment. By providing quality metrics of voice on an individual subscriber basis, a positive customer experience can be ensured.

The Polystar difference

To be truly useful as information, data must be digested, organised, and displayed. In many respects, having millions of rows of unstructured data is no real improvement over having no data at all. Polystar provides the solutions that make important data visible and usable—quickly and efficiently.



The fully customisable Crystallizer treemap GUI with real-time drilldown, the different coloured fields indicating the performance of different parts of the network.

The Jupiter and OSIX difference



The Fixed Line solution is built on our Jupiter and OSIX products. Real-time data is fed from OSIX to Jupiter, which provides a comprehensive array of predefined objects, reports, and KPIs. Each included report is tailored for its particular purpose, and provides a multi-dimensional view with filter and drill-down capabilities. Several reports can then be collected as views, or dashboards, for efficient visual monitoring.

For maximum usability, users can of course create their own reports through intuitive report-creating features. OSIX provides real-time analysis and thorough troubleshooting to find the root cause of the problem. Every segment of the call is correlated to provide a true end-to-end view of the transaction. In addition to the multi-leg call trace application, a vast range of applications exists for data capture, protocol analysis, analysis of historical data, and much more.

Why Polystar?

Polystar is a privately held company with 26 years of experience in the telecom industry, all of which have been profitable. We believe that this is partly due to the way we are owned. Free from the constraints of quarterly financial objectives set by the requirements of shareholders, Polystar can look long-term and develop relationships and solutions for tomorrow, not just today—which in turn keeps us profitable. Furthermore, our profitability helps us stay at the leading edge of technology. Rather than just being another player in the field, Polystar can be at the forefront of design and innovation, and remain a leader in its niche.